

SAGA Global Consultants

Consultancy Services

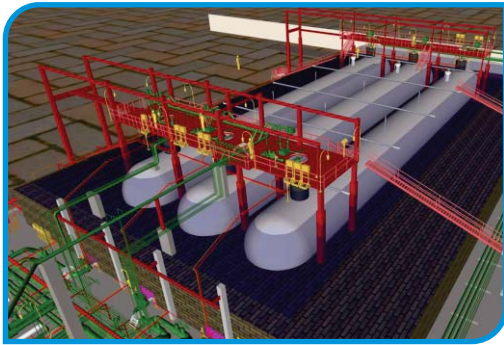
For LPG Facilities



Feasibility Study



**Operation Improvement /
Safety Evaluation**



Engineering Design



Marketing & Distribution



Project Management



**Procurement /
Supply of LPG Equipment**

DELIVERING SOLUTIONS CREATING VALUE



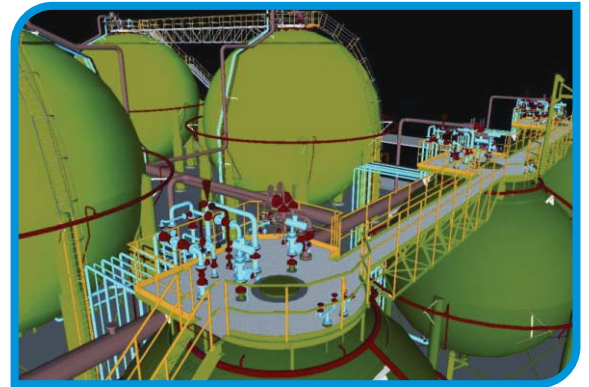
FEASIBILITY STUDIES

- ◆ Conceptual Studies and Business Plans
- ◆ Supply - Distribution of LPG
- ◆ Market Analysis
- ◆ Site Selection
- ◆ Capital Cost Estimation
- ◆ Economic Sensitivity Analysis



ENGINEERING DESIGN

- ◆ Layout
- ◆ LPG Storage
- ◆ Piping System
- ◆ Electrical System
- ◆ Civil Structures
- ◆ Automatic Gas Monitoring System
- ◆ Vapor Extraction System
- ◆ Automatic Fire Fighting System
- ◆ On-line Hot Air Sealing System
- ◆ Security - Access Systems, Alarms, CCTV, Security System



SAGA has the knowledge and experience to carryout design of LPG Facilities, as per international codes & Standards such as API, NFPA, IP, ASTM, BS, IEC, IEEE, and all the other major international standards.

PROJECT MANAGEMENT

- ◆ Project Monitoring & Control
- ◆ Contract Management
- ◆ Construction Management
- ◆ Inspection and Expedition
- ◆ Health, Safety and Environment
- ◆ Commissioning Assistance
- ◆ Quality Management



OPERATION IMPROVEMENT/SAFETY EVALUATION

- ◆ Formation of Standards/Guidelines
- ◆ Bench-marking Performance Parameters
- ◆ Operations Audit
- ◆ Safety Audit
- ◆ Evaluation of HSE
- ◆ HAZOP Study/Risk Assessment/Disaster Management Plan
- ◆ Health assessment of Existing Facilities
- ◆ Accident Investigation
- ◆ Training-Functional as well as behavioural



MARKETING & DISTRIBUTION

- ◆ Development of LPG Marketing Plan
- ◆ Customer Service Standards and Customer Satisfaction Measurement
- ◆ Developing Customer Service Network & Compliant redressal system
- ◆ Supply & Distribution Chain Management
- ◆ Brand Development / Promotion
- ◆ **Alternative channels of LPG:** Reticulated LPG (Piped Gas), Auto LPG



PROCUREMENT / SUPPLY OF LPG EQUIPMENT

- ◆ **Bulk LPG Storage** - LPG Bullets, LPG Road Tankers
- ◆ **LPG Filling Plant Equipments:** Pumps, Compressors, Filling Machines, conveyors, generators, air compressors, ROVs, Valves, Pipelines / Valves, Fire fighting equipment.
- ◆ Skid-mounted LPG Filling Plants
- ◆ **LPG Customer Premises Equipment:** Cylinders (Fibre Glass, Mild Steel), Regulators, LPG Gas Stove, Hoses, Safety Caps, Seals, Valves.
- ◆ **Alternate Uses of LPG:** LPG Geysers, LPG Generators, Room Heaters



About Our Experience

SAGA Global Consultants is a Consulting firm, operating internationally and specializing in all aspects of the LPG Industry. SAGA has provided LPG Consultancy service to many countries including India, Nigeria, Kenya, Tanzania, Uganda, Ghana, South Africa, Maldives, Saudi Arabia and Sudan.

SAGA offers services dealing with every aspect of handling and distribution of LPG. The business background of our senior management is in the LPG Industry and we now work extensively globally to raise technical and safety standards whilst responding to the local needs and conditions of the particular marketplace.

Projects to Mention:

- Market Assessment, Studies and business plans (Maldives)
- LPG Project Feasibility for Import Terminals (West Africa)
- Feasibility Study for setting-up of LPG Infrastructure (East Africa)
- LPG Project Feasibility for Auto-LPG Stations (West Africa)
- Health Assessment of LPG Facilities (Madagascar)
- Detailed Engineering Design (Process, Mechanical, Civil, Electrical, Instrumentation, Piping) of LPG Import Facility at Tema, Ghana
- Design of LPG Bottling Plants (Tanzania, Zambia)
- Design-Engineering of Skid-Mounted LPG Plants (Supplied Globally)
- Project Management and Construction Supervision of large LPG Bottling Plant
- Revamping and Modernization of LPG Plants
- Training - Functional and Behavioural on LPG
- Hazop/QRA studies at LPG Plants
- Selection and sourcing of LPG plant and equipment
- Commercial, Technical and safety Audits of LPG Facilities
- Accident Investigation
- Operation/ Maintenance of LPG Facilities



SAGA Global Consultants

B-608, Western Edge II, Western Express Highway, Borivali (E), Mumbai - 400066. India
 Tel: +91-22-4028 6100 • Fax: +91-22-4028 6106 • Mobile: +91-98203-02801
 E-mail: info@sagaconsultants.com • Visit us at : www.sagaconsultants.com